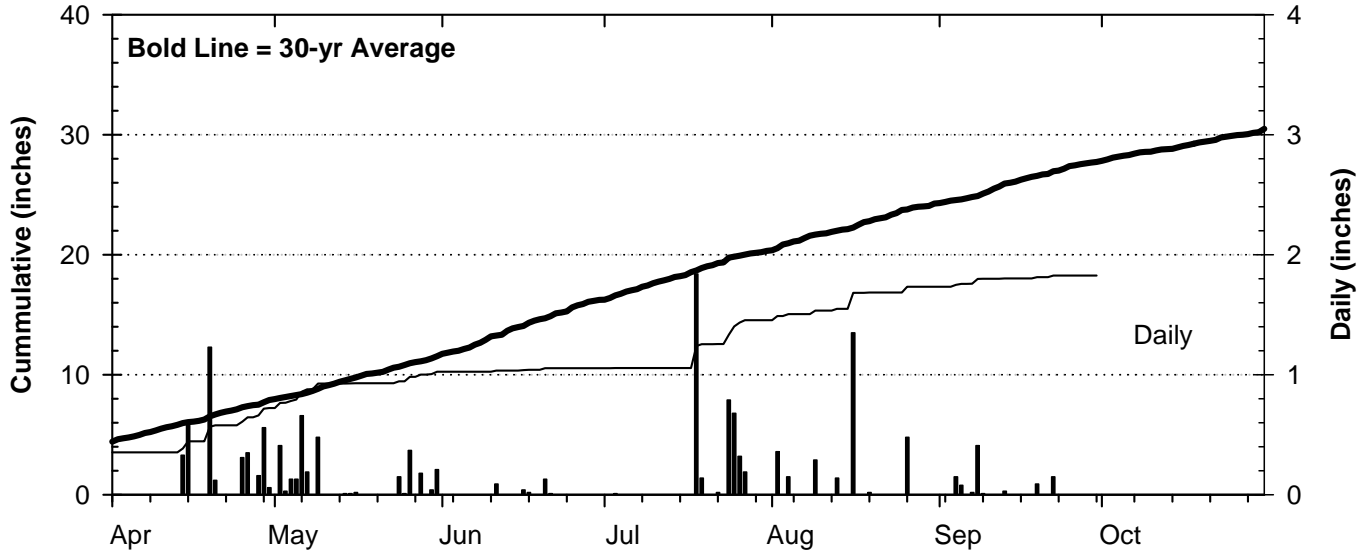
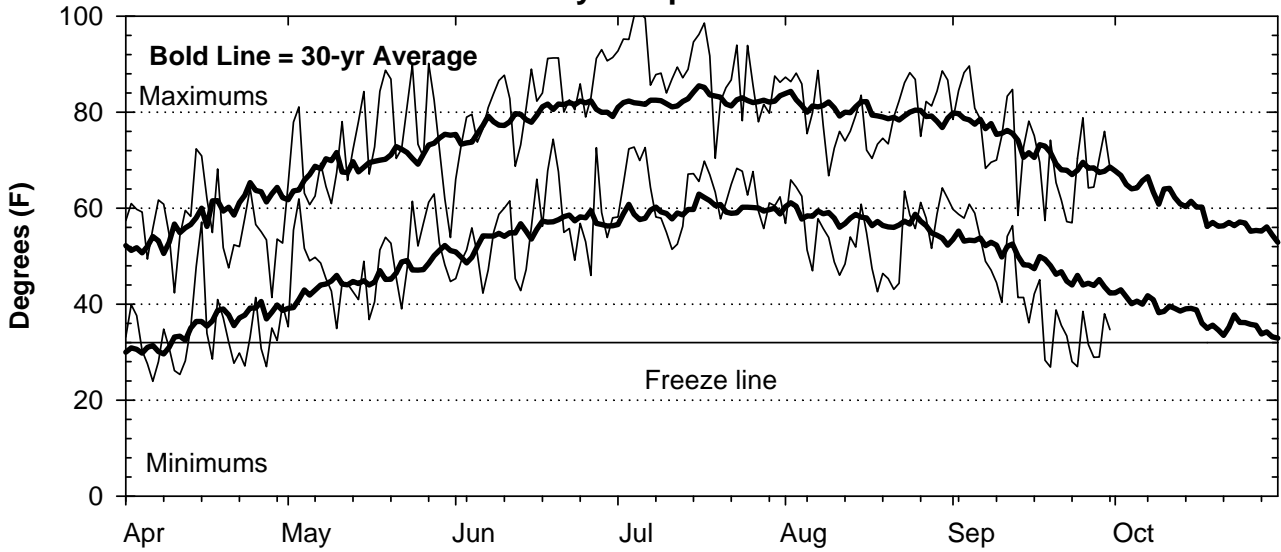


2012 Weather Summary for UW ARS - Arlington, WI

Precipitation

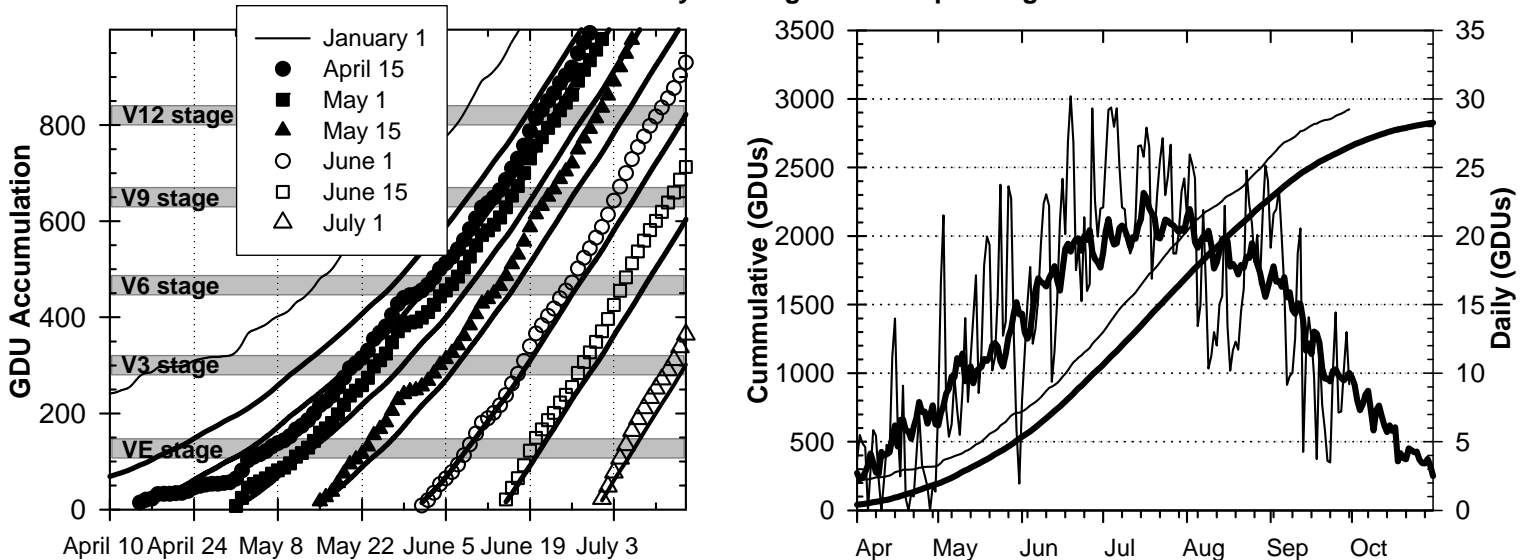


Daily Temperatures



Growing Degree Units (modified - base= 50, max = 86)

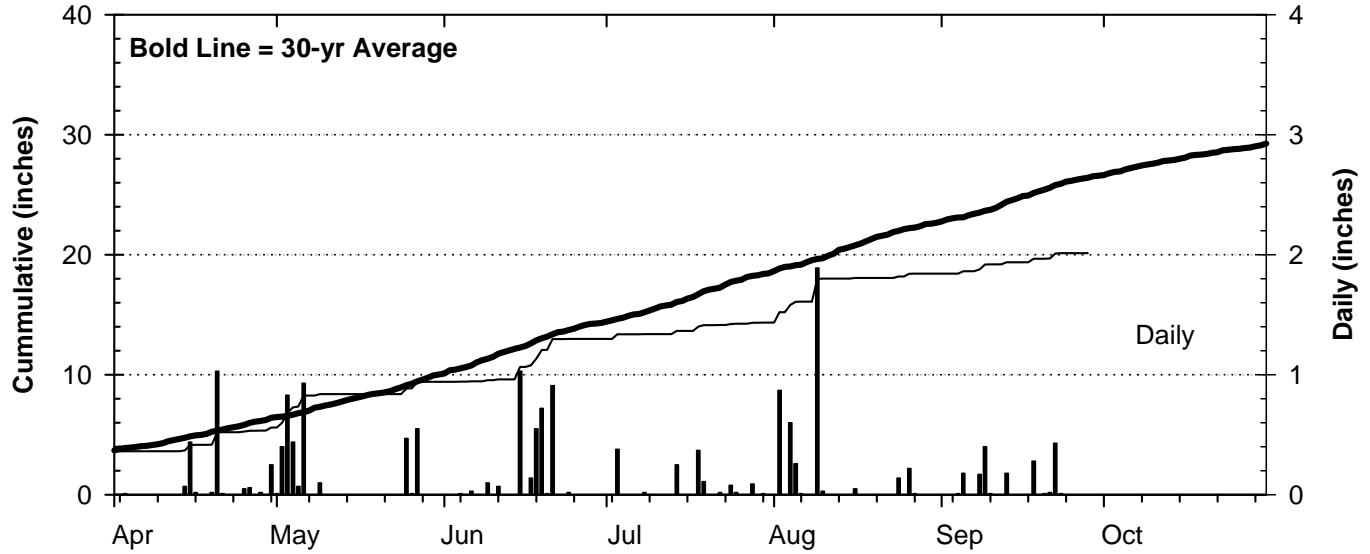
Bold Line = 30-yr Average for each planting date



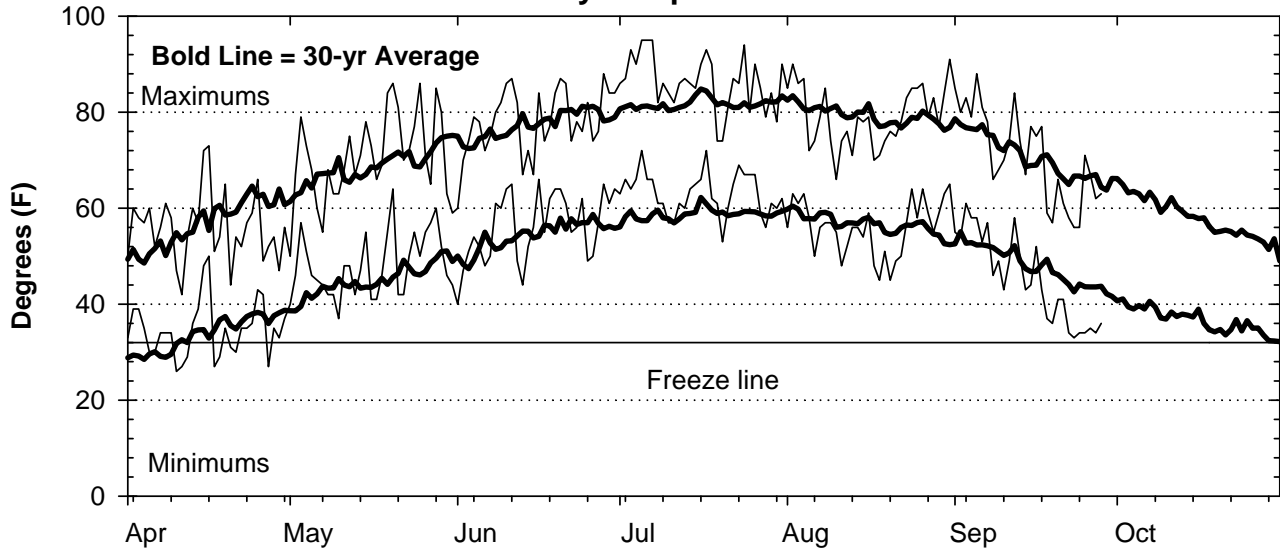
Source: Bill Bland (AWON, UW-Soils) and the Midwest Region Climatological Center.

2012 Weather Summary for UW ARS - Marshfield, WI

Precipitation

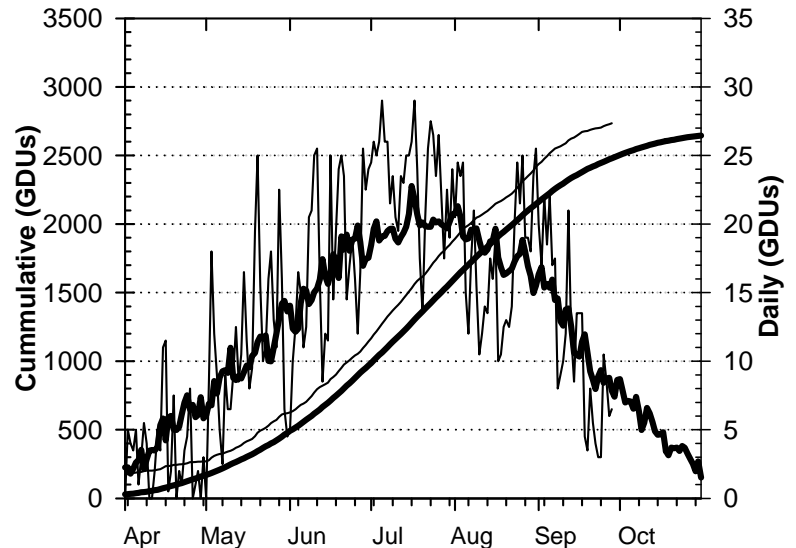
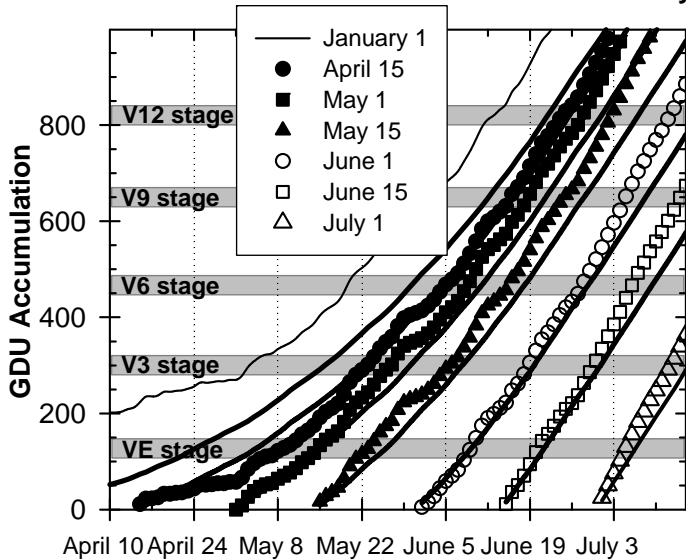


Daily Temperatures



Growing Degree Units (modified - base= 50, max = 86)

Bold Line = 30-yr Average for each planting date



Seasonal Growing Degree Unit and Precipitation Deviations from January 1 to current date (or October 31). Years were selected using ± 1 standard deviation of the 30-year normal.

