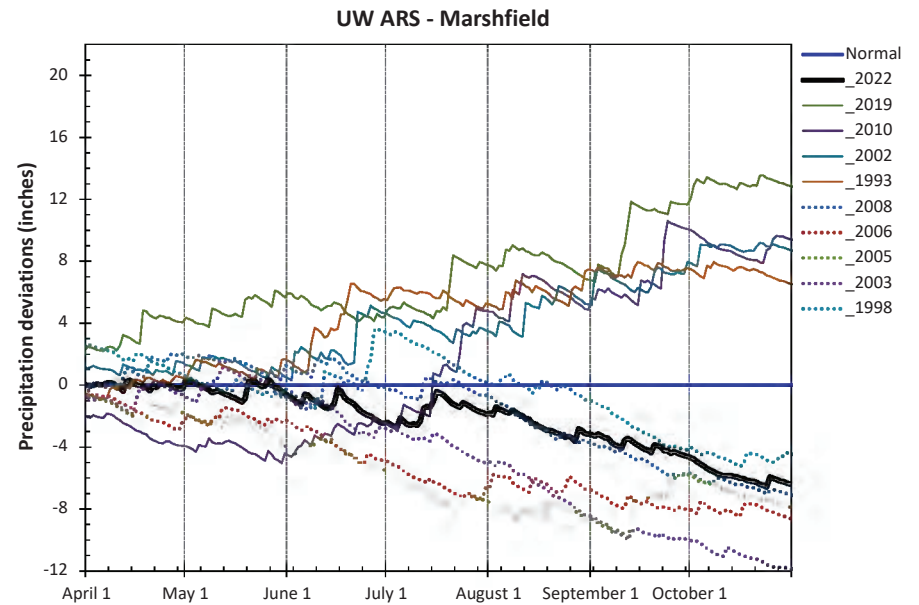
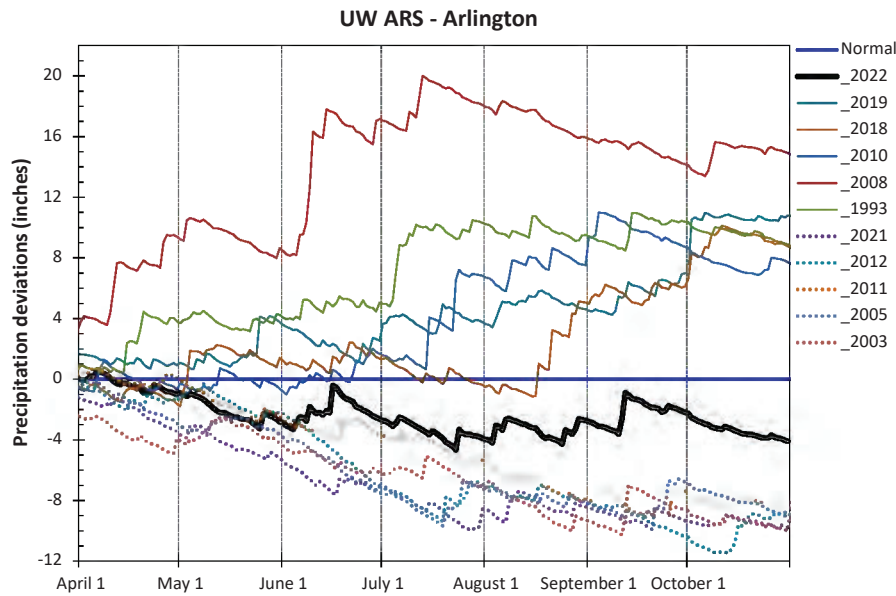
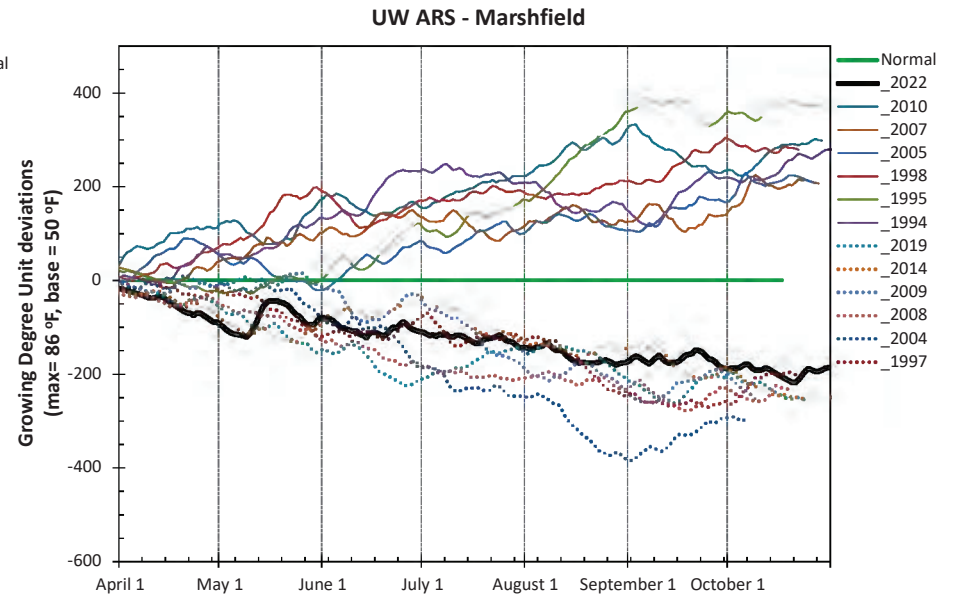
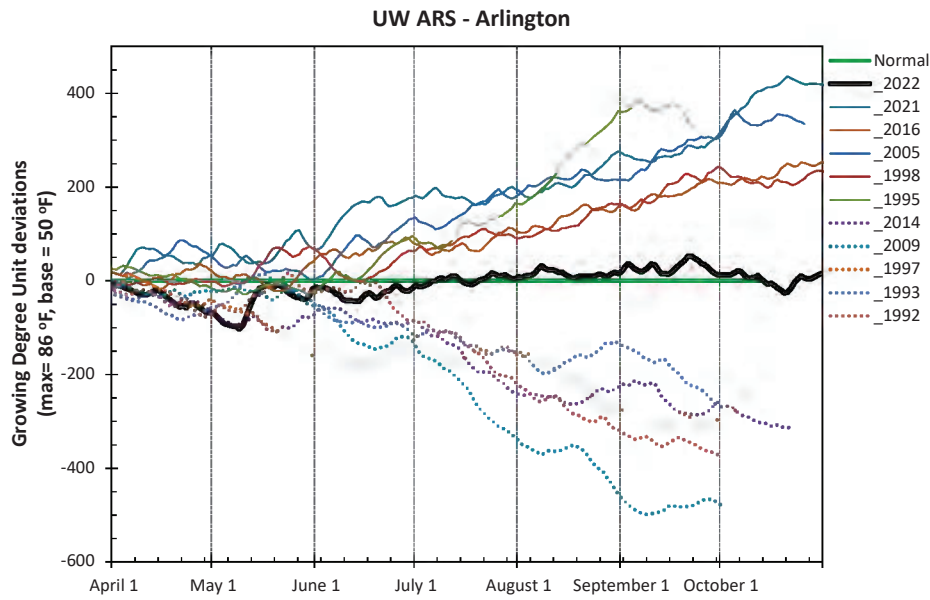
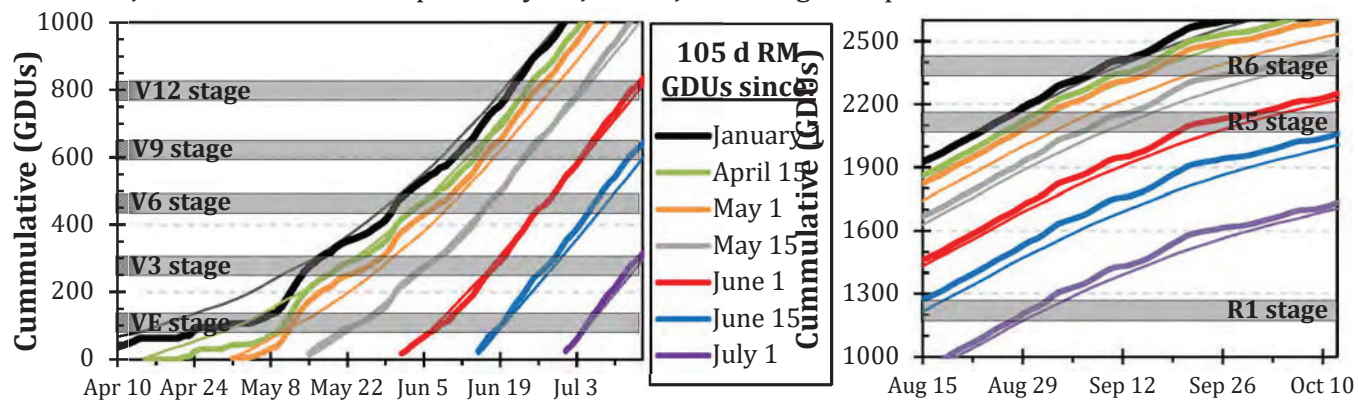
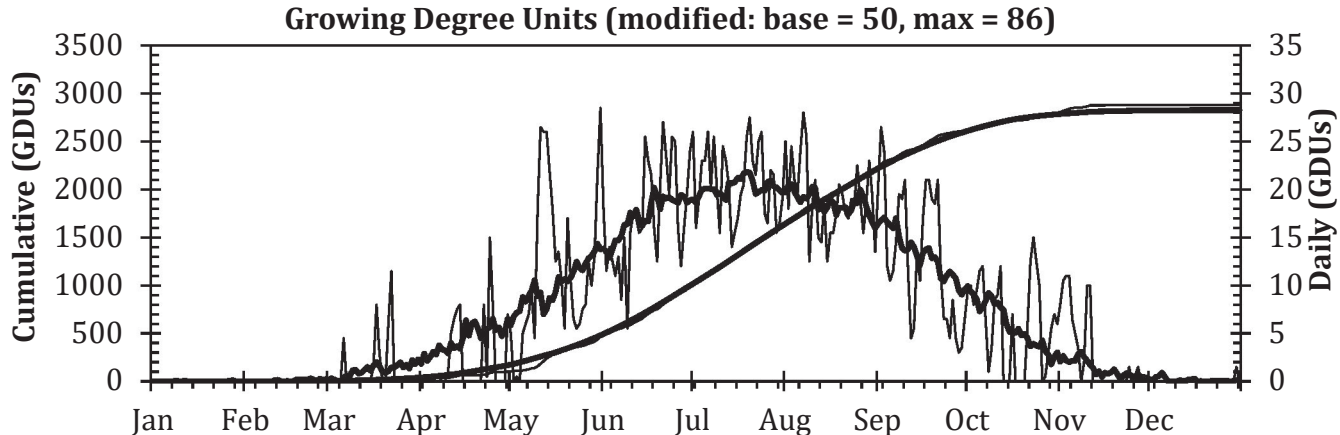
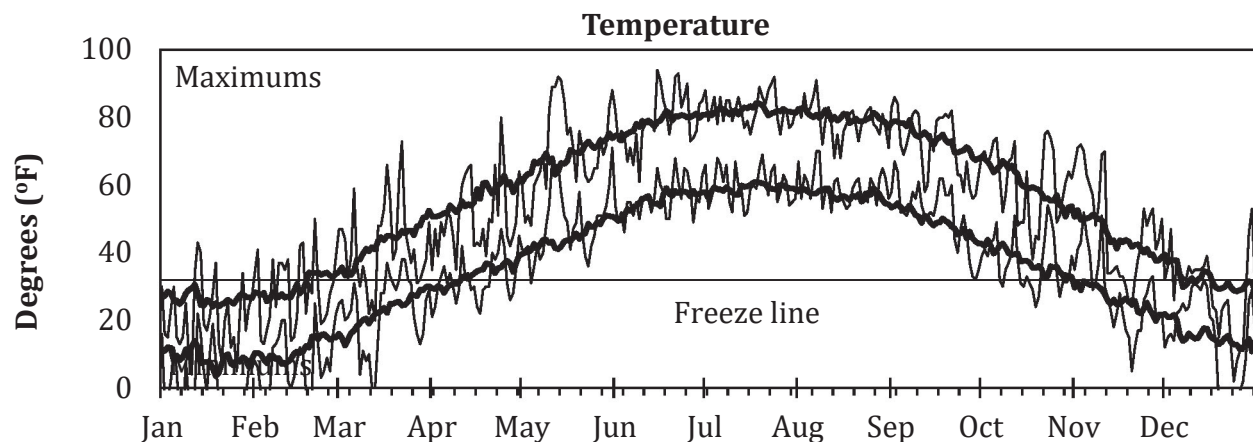
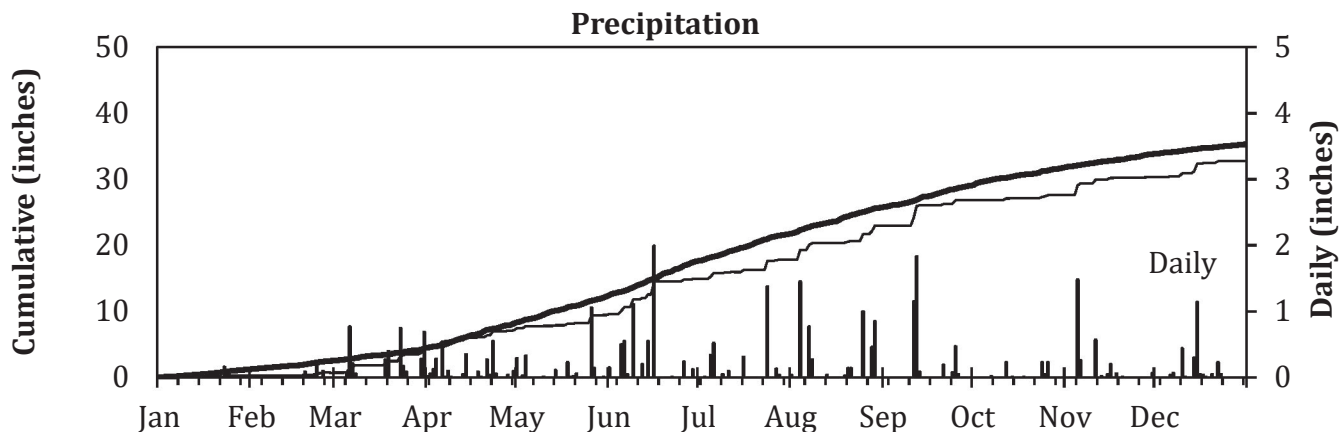


2022 Seasonal Growing Degree Unit and Precipitation Deviations from April 1 to the current date (or fall killing frost date  $\leq 28^{\circ}\text{F}$  or October 31).  
 Years were selected using  $\pm 1$  standard deviation of the 30-year normal.



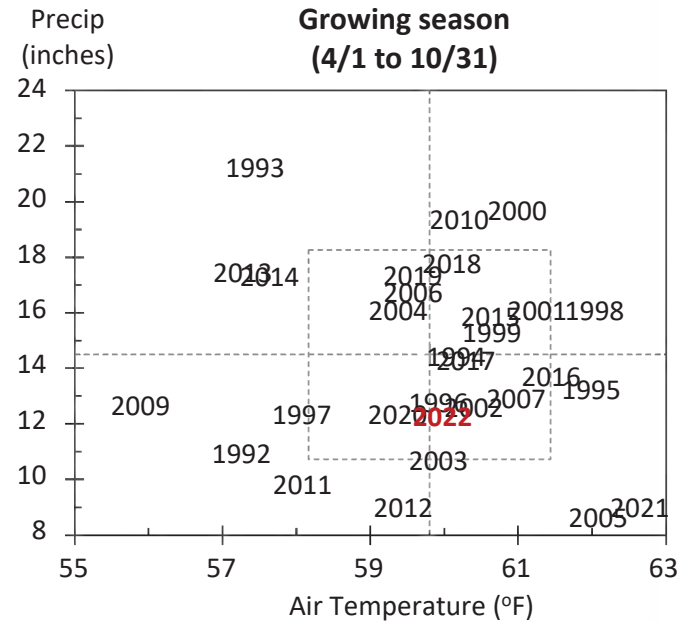
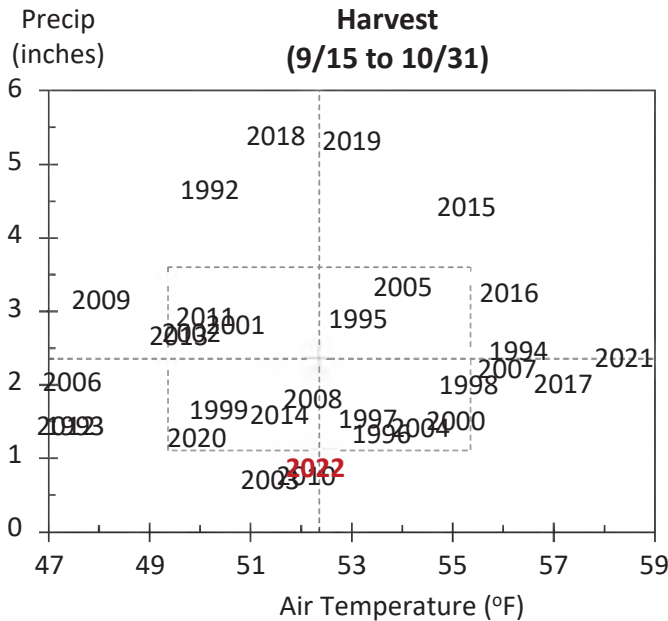
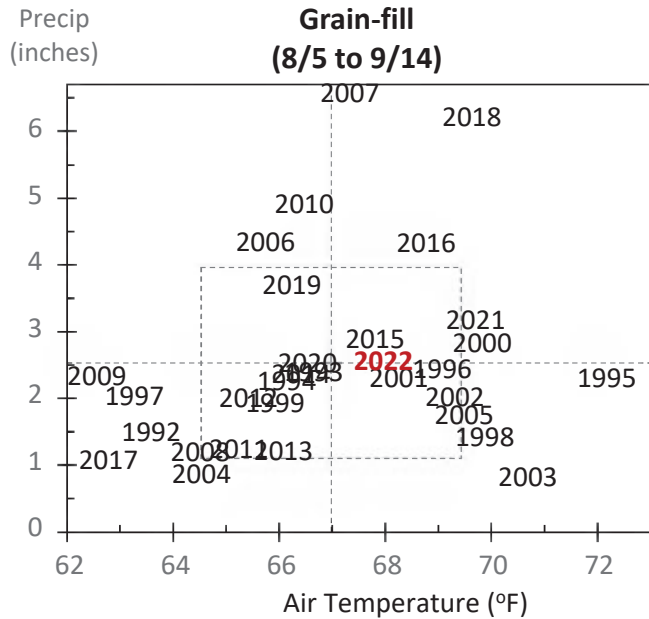
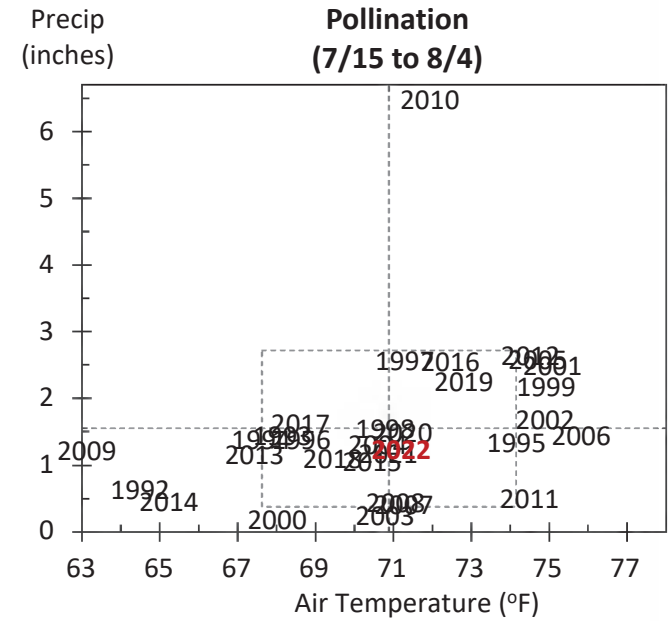
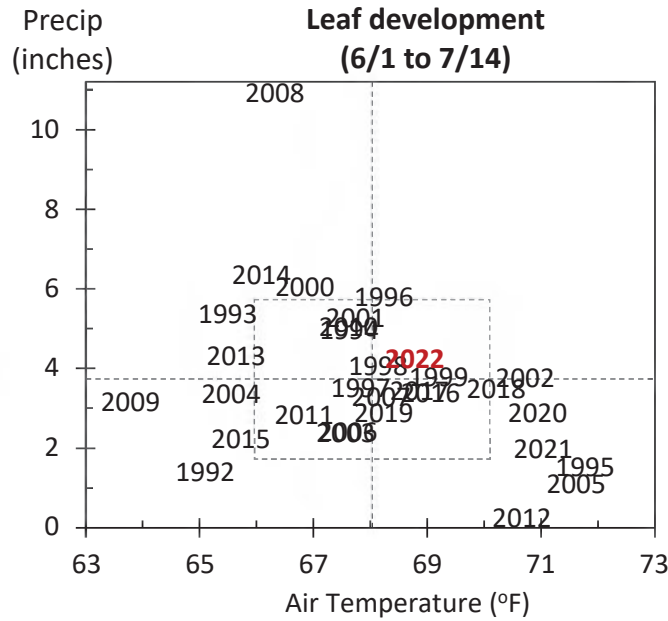
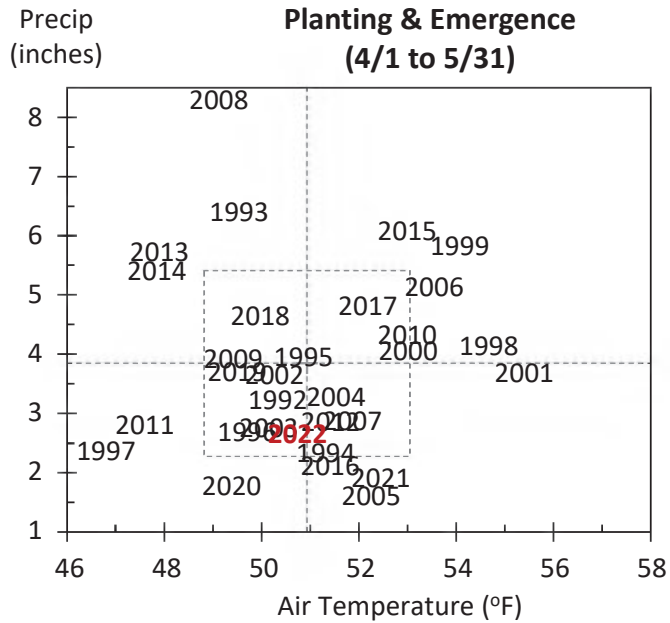
# 2022 Weather Summary for UW ARS - Arlington, WI

Bold Line = 30 year Normal



# Average Temperature and Precipitation

Dashed lines = 30-yr Normal; Dashed box =  $\pm$  one standard deviation



Lauer © 1994-2023

**Table A-1. Monthly and total precipitation (inches) data for the Arlington Research Station.**

Year	Jan	Feb	Mar	Apr	May	June	July	Aug	Sep	Oct	Nov	Dec	Annual
1993	1.6	1.0	2.3	7.1	4.5	6.1	9.4	3.2	4.2	1.2	1.6	0.2	42.3
1994	0.9	2.0	0.1	2.3	2.0	7.9	6.1	4.0	4.7	0.5	2.8	0.8	34.0
1995	1.3	0.1	2.2	3.4	6.0	2.2	2.8	5.0	1.8	4.2	2.4	0.7	31.9
1996	1.8	0.5	0.3	2.6	3.2	7.8	2.4	2.8	0.9	3.3	0.8	1.6	28.0
1997	0.7	2.8	2.2	2.0	3.3	4.9	6.3	3.2	1.6	1.4	1.0	0.8	30.0
1998	1.2	0.9	3.3	4.0	4.1	6.8	2.1	6.7	3.0	3.4	1.6	0.3	37.4
1999	2.8	1.2	0.6	6.0	3.9	5.3	3.4	2.5	1.4	1.4	1.3	1.0	30.9
2000	1.0	2.3	1.4	3.4	10.5	7.2	3.4	3.3	3.1	0.7	1.5	1.5	39.3
2001	0.8	1.4	0.4	3.1	4.7	7.0	2.9	5.3	5.2	1.7	1.7	1.4	35.8
2002	0.5	1.1	0.8	3.4	3.2	4.3	2.9	3.7	1.9	4.0	2.1	0.6	28.7
2003	0.4	0.2	1.4	2.2	3.8	3.3	3.3	1.8	4.0	1.3	5.3	1.9	28.9
2004	0.3	1.2	2.7	1.9	10.3	4.1	4.3	3.0	0.5	3.3	1.6	1.6	34.8
2005	1.5	1.2	1.8	0.8	3.4	1.5	4.4	3.1	4.7	0.6	3.8	1.0	27.6
2006	1.6	0.6	2.1	5.1	4.3	4.5	4.1	6.1	5.4	3.2	1.7	0.9	39.6
2007	0.5	1.5	3.2	3.3	1.2	3.3	2.9	11.3	2.8	2.3	0.5	3.3	36.3
2008	2.9	2.6	2.8	9.3	3.3	13.8	5.1	1.9	1.6	3.4	1.3	1.8	49.8
2009	0.4	1.7	4.8	4.3	3.6	4.3	2.3	3.2	2.4	4.6	1.3	2.8	35.5
2010	1.7	1.1	1.0	3.7	4.2	7.6	9.3	4.7	4.5	1.7	1.4	1.7	42.5
2011	0.6	0.7	3.4	3.5	1.6	4.1	2.5	1.5	3.9	1.6	3.3	2.4	28.9
2012	0.8	1.0	2.5	3.1	2.9	0.3	4.3	2.9	1.0	4.0	1.1	2.5	26.3
2013	2.3	1.9	2.4	5.4	6.0	7.5	3.0	1.8	3.0	1.5	2.6	1.1	38.5
2014	0.7	1.0	1.0	6.4	2.8	9.3	1.9	3.7	1.8	2.7	1.7	1.1	34.3
2015	0.4	1.0	0.4	6.4	4.4	3.1	3.2	4.3	5.7	2.0	4.9	3.4	39.1
2016	0.8	0.4	4.3	1.5	3.4	4.4	6.5	5.5	6.2	3.4	1.6	1.3	39.2
2017	2.5	1.6	2.8	5.3	3.3	6.1	3.7	1.7	0.8	3.7	0.7	0.6	32.7
2018	1.5	1.7	0.8	2.6	7.1	5.3	2.4	9.4	4.4	5.3	1.5	1.6	43.6
2019	2.1	3.0	1.0	2.9	7.0	4.1	5.4	4.9	5.7	6.5	2.4	1.9	46.8
2020	1.7	1.0	3.4	1.4	4.3	4.4	5.0	3.6	4.3	4.0	2.8	0.9	36.7
2021	1.2	0.7	1.3	1.5	2.4	3.5	2.6	4.2	2.4	2.2	0.4	1.2	23.5
2022	0.3	0.4	3.7	2.7	2.3	5.5	2.9	5.2	3.9	0.8	2.7	2.4	32.8
30-year Average	1.2	1.3	2.0	3.7	4.2	5.3	4.0	4.1	3.2	2.7	2.0	1.5	35.2

**Table A-2. Average monthly and annual temperature (F) data for the Arlington Research Station.**

Year	Jan	Feb	Mar	Apr	May	June	July	Aug	Sep	Oct	Nov	Dec	Annual
1993	19	19	29	42	57	64	69	69	55	46	33	23	44
1994	6	13	33	46	56	68	67	67	64	53	40	28	45
1995	20	23	37	44	57	72	73	76	60	52	29	21	47
1996	16	22	29	44	55	68	69	70	62	51	30	23	45
1997	17	24	33	42	51	68	69	65	61	50	32	27	45
1998	23	33	33	48	62	66	71	71	65	51	39	30	50
1999	15	30	35	48	60	68	75	67	59	48	43	25	48
2000	20	29	41	45	61	65	69	71	62	54	34	10	47
2001	20	17	30	51	59	67	72	71	59	48	46	31	48
2002	26	27	29	46	54	69	75	70	64	44	34	27	47
2003	17	17	32	44	56	66	71	72	61	49	35	28	46
2004	14	22	37	47	56	65	69	64	65	50	39	24	46
2005	17	27	30	50	54	72	73	70	65	50	36	17	47
2006	29	21	34	50	57	66	73	69	58	44	38	29	48
2007	21	13	37	43	60	68	70	70	62	53	33	17	46
2008	15	14	27	45	53	66	70	67	61	47	34	14	43
2009	8	21	31	43	56	64	63	64	60	42	38	18	42
2010	14	19	36	49	57	66	71	70	58	50	36	15	45
2011	13	18	28	41	54	65	73	68	57	49	36	27	44
2012	21	27	46	44	59	68	76	67	58	45	34	25	47
2013	16	17	22	39	56	64	68	67	60	46	31	13	42
2014	6	8	22	41	55	67	65	69	60	48	28	27	41
2015	18	9	33	47	59	66	69	68	66	51	41	34	47
2016	18	25	38	45	58	69	71	71	64	52	43	21	48
2017	22	30	32	49	55	68	70	65	64	52	34	21	47
2018	17	19	32	35	64	69	71	71	64	47	30	27	46
2019	15	16	28	45	54	66	73	67	64	47	29	29	45
2020	24	21	36	43	56	69	74	70	60	44	42	25	47
2021	21	12	38	48	57	71	71	72	64	56	36	29	48
2022	11	18	32	42	60	68	71	69	62	49	38	22	45
30-year Average	17	20	33	45	57	67	71	69	61	49	36	24	46