

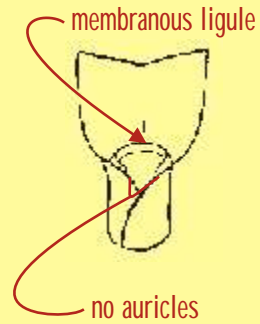
# Wirestem muhly



Wirestem muhly has round stems with bushy growth.

Key characteristics:

- no auricles
- membranous ligule
- short, scaly, creeping rhizomes



stems with bushy growth



short, scaly creeping rhizomes

## mistaken identity

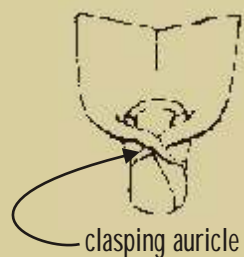
Wirestem muhly can be confused with quackgrass.

Key differences:

Quackgrass has:

- a clasping auricle
- long, non-scaly rhizomes

quackgrass



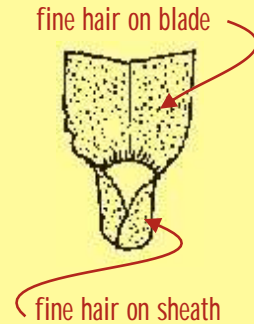
# Woolly cupgrass



Woolly cupgrass has round stems and erect growth.

Key characteristics:

- fine hair on leaf blade and sheath
- one leaf edge that is distinctly wrinkled
- large seed is remains attached to root



wrinkled leaf edge



seed attached to root

## mistaken identity

Woolly cupgrass can be confused with giant foxtail.

Key differences:

Giant foxtail has

- a hairy sheath margin
- larger hairs on blade
- no wrinkled leaf edge

Giant foxtail



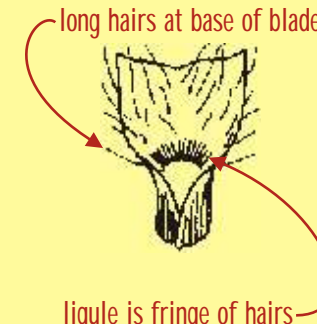
# Yellow foxtail



Yellow foxtail has flattened stems and erect growth.

Key characteristics:

- long hairs on the upper leaf surface at the base of the blade
- ligule composed of a fringe of hairs
- no auricles



flattened stems



long hairs on upper leaf surface

## mistaken identity

Yellow foxtail can be confused with giant foxtail.

Key differences:

Giant foxtail has

- a hairy sheath margin
- short hairs over the entire leaf blade

Giant foxtail



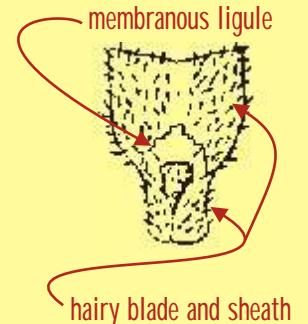
# Large crabgrass



Large crabgrass has round to flattened stems with prostrate growth.

Key characteristics:

- hairy blade and sheath
- membranous ligule - smooth crabgrass also has a membranous ligule, but only has scattered hairs



membranous ligule



hairy blade and sheath

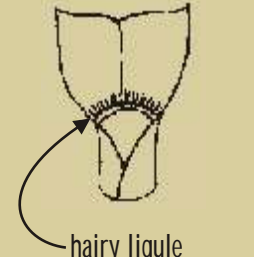
## mistaken identity

Large crabgrass can be confused with foxtails and other annual grasses.

Key difference:

Foxtails, fall panicum, woolly cupgrass, and wild proso millet have a hairy ligule

EXAmpl e



# IPM Quick Guide

## Troublesome Weeds of Wisconsin

Printing of this publication was funded by the Wisconsin Corn Promotion Board.

Correct identification of weeds is key to a successful weed management program. If weeds are not correctly identified, then the wrong herbicide may be applied resulting in poor control, yield loss, and lower profits.

Avoid these problems by correctly identifying weeds! This guide will help you by providing key characteristics for seven different weeds and how to avoid confusion with other weeds of similar appearance. If you are still in doubt or if you have other troublesome weeds, seek local experts for help.

The seven following weeds were chosen based on two factors: their numbers are increasing in Wisconsin, and they have specific traits that make them troublesome.

- Giant ragweed grows rapidly early in the season, which makes timing herbicide applications difficult
- Eastern black nightshade has berries that cause problems in corn's rotational crops
- Waterhemp is frequently resistant to ALS herbicides

- Wirestem muhly is a hard-to-control perennial in no-till corn
- Woolly cupgrass is difficult to control in one pass spray programs
- Yellow foxtail is more tolerant to several postemergence herbicides
- Large crabgrass is hard-to-control after emergence in conventional corn

Published by the Nutrient & Pest Management Program  
For additional copies call: (608) 265-2660  
Visit our website at: <http://ipcm.wisc.edu>

College of Agricultural and Life Sciences, University of Wisconsin-Madison, University of Wisconsin-Extension, Cooperative Extension. May 2001



Composite family

*Ambrosia trifida*

6-10 ft. tall

## Giant ragweed

emergence

prior to planting | corn planting season | corn emergence/growth

Giant ragweed has coarse, rough stems with erect growth.

Key characteristics:

- rough and hairy leaves with 3-5 deep lobes
- leaves are opposite (directly across from each other) on stem



seedling stage



leaves opposite on stem



deeply lobed leaves

## Partner in crime

Giant ragweed is often found in fields with common ragweed.

Common ragweed



Key characteristics::

- common ragweed has smooth, finely divided leaves
- seedling resembles a carrot plant

Nightshade family

*Solanum ptycanthum*

1-2 ft. tall

## Eastern black nightshade

emergence

prior to planting | corn planting season | corn emergence/growth

Eastern black nightshade has erect or spreading stems.

Key characteristics:

- seedling has purplish color on the underside of leaves
- mature leaves often have "shotholes" from beetle feeding



seedling stage



young plant with "shotholes"



"shotholes" on leaf

## mistaken identity

Eastern black nightshade can be confused with redroot pigweed and common lambsquarters seedlings.

Key differences:

- lambsquarters leaf has mealy white covering
- pigweed leaf has small notch at the end



Lambs-quarters



Redroot pigweed

Pigweed family

*Amaranthus tuberculatus*

3-8 ft. tall

## Waterhemp

emergence

prior to planting | corn planting season | corn emergence/growth

Waterhemp has smooth stems and erect growth.

Key characteristics:

- slender seedhead without bristles
- no hair on any part of the stems or leaves
- shiny mature leaves are 3-6 inches long



seedling stage



shiny mature leaves



seedhead without bristles

## mistaken identity

Waterhemp seedling can be confused with smooth and redroot pigweed (see eastern black nightshade panel) seedlings.

Key difference:

- pigweed has scattered or many hairs while waterhemp lacks hair on any part of the plant

Smooth pigweed

